



## 2010 4 Cylinder Weekly Rules

(not to be confused with the FWD Enduro Rules) Updated February 27, 2010

### Notice to Competitors:

The following rules are written with the intent of providing a fun and safe experience for the drivers of these cars. The rules set forth address all aspects of construction. If there are **ANY** questions concerning the implementation of these rules, please contact the speedway tech line. **Cars that are not considered properly prepared may be rejected by the tech committee.**

Thought to remember:

**“These are cars we race, NOT race cars”!**

### Eligible Models:

**This class will be limited to North American 4-cylinder front /rear wheel drive (FWD-RWD) cars with a maximum wheel base of 104”. The following models are approved for competition:**

- 1982-2005 Chevrolet Cavalier (w/1.8, 2.0, 2.2L OHV engines only)
- 1982-1994 Pontiac Sunbird (w/1.8, 2.0L OHV and 1.8, 2.0L SOHC engines only)
- 1995-2002 Pontiac Sunfire (w/2.2L OHV engine only)
- 1995-2002 Dodge/Plymouth Neon (No R/T-ACR models) (w/2.0L SOHC engine only-No 2.0L Magnum SOHC)
- 1986-1994 Plymouth Sundance (w/2.2 and 2.5L SOHC engines only)
- 1989-1995 Dodge Spirit (w/2.2 and 2.5L SOHC engines only)
- 1989-1995 Plymouth Acclaim (w/2.5L SOHC engine only)
- 1984-1994 Ford Tempo/Mercury Topaz (w/2.3L HSC/HSO engine)
- 1981-1996 Ford Escort/Mercury Lynx (w/1.6, 1.8, 1.9L SOHC engines only)
- **Please note Mustang has been removed from being eligible**

**NOTE:** Other vehicle makes and models may be considered in the future but they must be approved for competition by the technical committee. **Contact the Speedway before you build.**

**1. BODY:** Car is basically a street vehicle with **all of the interior and glass removed**, except front windshield and the dash. **Original OEM glass windshield must be used. It must be secured in place with OEM type urethane. No other type of mounting allowed. Slight cracks in the windshield may be accepted but will be at the discretion of the tech officials in the interest of safety.** Stock dashboards must remain intact in stock location. Floor pan must be complete. Stock hood and trunk lids must be complete including hinges. **Latches and lock cylinders must be removed. Two quick release pull type pins must be installed in both the hood and trunk lid.** If there are any rust holes in the floor pan/body they may be repaired with the same gauge metal as original. Stock bumpers must remain. **No reinforcing allowed.**

**NOTE:** The **vehicle serial number** (as seen through the lower left corner of the windshield) **MUST be readable. Cars will not be allowed to compete if this number is not visible. This number will be recorded during inspection.**

**2. MIRRORS:** One stock **INSIDE** mirror, to the right of the driver, with a maximum glass area of 24 sq. in. measured at the widest points is allowed. **No concave, convex, or EXTERIOR mirrors are allowed.**

**3. DOORS:** Driver's door AND PASSENGER DOOR must be welded or bolted shut. It is recommended that the drivers inner door panel be removed in order to accommodate the curve of the roll cage shown in Appendix "A".

**4. ENGINE:** Must be stock for year/make/model. **No double overhead cam engines. NO turbochargers. NO superchargers. NO Rotary engines Absolutely NO Powertrain modifications.** Transmission must be OEM stock for year/make/model. Only stock differential allowed. **Differentials must not be locked.**

**5. TRANSMISSION:** Must be stock transmission for year/make/and model of car. Transmission may be either standard or automatic.

**6. COOLING SYSTEM.** Radiator must be stock OEM type and mounted in stock position. Water will be the only approved coolant. **Absolutely no antifreeze. Cars will be inspected for proper coolant.**

**7. EXHAUST:** Exhaust must follow OEM routing from engine but must exit **ahead of the RIGHT rear wheel** and not extend past the rocker panel. **Maximum pipe size is not to exceed 2" OD.(outside diameter).** A muffler or catalytic converter will not be required.

8. **FUEL SYSTEM:** Stock carburetor / fuel injection system for that make and model. Steel OEM type fuel lines will be used routed in stock locations. Rubber may only be used where the steel lines join to either the fuel metering device up front and the fuel tank in back. **No COPPER** line.

**Electric Fuel Pump:**

There must be a **clearly marked on/off switch installed on the left side of the dash** and be **accessible from outside vehicle**. It must be wired in series in the fuel pump electrical circuit to act as a safety shutoff of the fuel pump. Switch operation will be checked during pre-race inspection. Regular unleaded fuel only. No Race fuel

9. **CHASSIS:** No modification of any part of the car for performance or handling. No cut coil springs. Camber on all wheels must be **ZERO +/- 1"** measured with an angle square at bottom and top of tire sidewall. This dimension will be subject to inspection.

**Ride height must be at stock height** and be equal at all corners. If the car was originally equipped with a REAR sway bar it must be removed. There will be **NO REAR SWAY** bars allowed.

**NOTE: For 2010, camber on the Right Front Wheel will be increased to a MAXIMUM of three (3) inches as measured at top of tire sidewall**

10. **TIRES:** OEM tires and wheels only. Wheel and tires must be the **same size on both sides**. Stock wheels only with a maximum width of **6"** inside bead to bead. Tire sizes: **13"** tires may be no larger than **185-70-13**. **14"** tires may be no larger than **195-70-14**.

11. **ROLL CAGE:** **A 4 point roll cage is mandatory**. Roll bar piping must meet a minimum of **1 3/4" diameter x 0.095 thickness roll bar tubing**. Roll cage is to consist of the following: Four upright pipes at the corners of cage. The front uprights are to be angled rearward to meet "halo" at the top of cage near top of "A" pillars. The rear uprights will join the halo and will be used to anchor the seat back. The pipes must be welded to **6" x 6" x 3/16"** plates located above and below the floorpan of the car. This will form the main perimeter of the cage. Driver's side of cage must have three (3) parallel mounted bars connecting two uprights at top of door and one at floor level. The parallel bars are to be secured by several upright pipes welded between the parallel bars. They are to be placed a minimum of **12"** apart. The inner door panel may be removed and the piping moved out slightly into door to give more clearance between driver and left side of cage. There is to be a bar joining the front uprights from side to side at dash height. The passenger side of the cage is to consist of one parallel and one diagonal bar between the front and rear uprights. Rear of the cage is to consist of a horizontal bar connecting the bottom of the uprights for lateral cage strength. The other bar is to be used to secure the seat back. All welds must be professional. Welded gussets are highly recommended. **The roll cage piping should be padded close to the driver. Closely following the text and the attached drawing in APPENDIX "A" will assist in accurate construction of this cage assembly.**

12. **BATTERY:** Must remain in stock location. It must be covered with **non-conductive material** (i.e. plastic or rubber cover).  
In addition there must be a **master electrical disconnect switch** installed **on the dash area**. It must be accessible to the driver (in belted position) as well as from the outside for safety crew access. The switch is to be installed in series with the negative battery cable. The purpose is to disable all electrical power to the vehicle from the battery.
13. **FUEL TANK:** Gas tanks are to be inside the car between and in front of the rear wheels. A marine tank may be used. **Stock tanks are okay if the tank is underneath the car and located ahead of the rear wheels. Tank must be covered by a 1/8" plate bolted to the floor pan.**  
Hatchback type cars without a trunk must have tank completely enclosed in metal cover. All cars that have installed the fuel tank in the trunk must **seal off passenger compartment with sheet metal. NO EXCEPTIONS. This is not an area to skimp.**  
Please ensure fuel cell installation is completely safe and secure. **Contact tech for clarification if unsure of setup.**
14. **SEAT:** **Aluminum racing seat is recommended.** Original factory seat MAY be used. On fold-down type seats the back must be securely anchored to the roll cage to prevent pitching forward (**See appendix "A"**). **Seat installation is subject to inspection.**
15. **SEAT BELTS:** **A 4-point racing harness is MANDATORY.** Belts must be securely anchored and properly installed. **NO** mounting of belts through the webbing.
16. **SAFETY ITEMS:** All cars must have a securely installed quick release racing window net. All air bags must be deactivated. Fire extinguisher in driver's cockpit is **MANDATORY.** A minimum **5lb unit** must be securely attached in original quick release bracket and be within easy reach of driver when belted in the seat. It must have a recharge slip dated no earlier than January first of the current year. **A DOT approved FULL FACE helmet is MANDATORY.** A firesuit is recommended or **CARHART** type pants and jacket are acceptable. A Neck brace is recommended.
17. **BRAKES:** Must have four wheel functioning brakes. No air ducts allowed. Cars without adequate brakes will not be allowed to compete. **Third brake light MUST remain intact** and be operable. **Mandatory that older cars MUST add a third brake light** (put the stock taillight or a trailer light securely attached on the rear speaker shelf. Light will be inspected for proper operation.
18. **Weight:** No added weight or ballast allowed.

19. Tow Hooks: **Tow hooks are required front and rear.** They must be attached to any solid structure in the bumper area (i.e. bumper impact bar support). Three or four links of chain welded to the bumper mounts is sufficient.
20. Please remember the most important rule is “STOCK”. If you are unsure as to whether components are stock do not hesitate to contact Speedway 660. **Any items suspected of being modified will be disallowed from competition.** These cars will be subject to a **preliminary inspection as well as a POST race inspection** and may also be inspected for rule compliance at any time.
21. If you have never built a car, please contact Speedway 660 for build clarification.

**Contacts:**

Email: [info@speedway660.com](mailto:info@speedway660.com)  
Phone: 454-RACE (7223)

**22. CLAIM RULE:**

- **The track has the right to claim any car at any time.**  
One driver cannot claim another drivers' car. The intent of the claim rule is to prevent an individual from deliberately increasing the cost to compete and gaining an unfair advantage in competition.
- The entire amount of \$ 750 cash (Canadian) shall be paid directly to the driver of the car being claimed.
- Claim does not include: fire extinguisher, seat belts, window net, aluminum racing seat, and battery.
- Claim does include: entire car as it came off the racetrack, except for the items listed above.
- Refusal to sell forfeits all cash and contingency winnings for that event, any trophies earned that day, plus all points earned that season to date, and a fine equal to the amount of the claim must be paid before the driver or car races at any future Speedway 660 event in any division.
- Refusal to sell also imposes a permanent suspension for the car being claimed from competition at Speedway 660.
- Reinstatement will be considered following an application in writing by the claimer who refused the claim. Certain conditions could be required as part of the reinstatement.

**23. DRIVER ELIGIBILITY:**

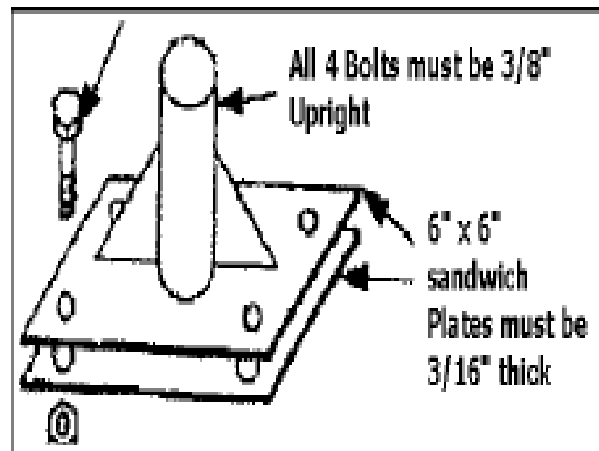
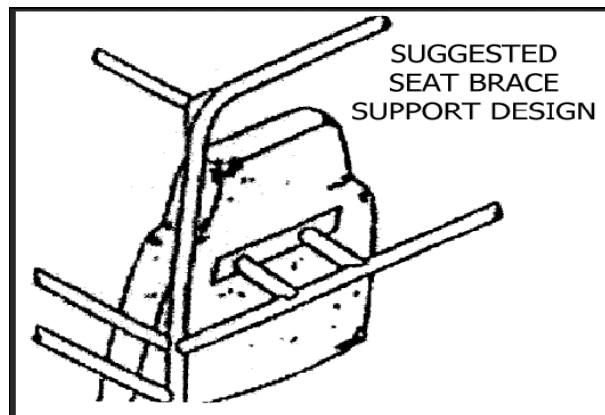
As the intent of this division is to promote a fun, safe, and equally competitive entry level experience, it will be mandatory that anyone who is not a novice (first

**time racer) obtain pre-approval to compete in this 4 cylinder weekly class. We do understand that there may be some drivers who have raced in other divisions and would like to return to the speedway and run in this division. We will handle those requests on a one on one basis in terms of allowing drivers who are not at novice level to compete. Keep in mind that we are very focused on making and keeping this division as a true entry level.**

# APPENDIX "A"



**NOTE: Optional - Right side pipes may be in the form of an "X" or a single tube angled down from top of door on the right rear pipe to the bottom of the right front pipe.**



**NOTE: The bolts used to sandwich the cage to the floorpan must be a minimum of grade 8 material.**